

## *Bulls for sale private treaty*

We have yearling bulls being developed, and a handful of age-advantaged bulls ready to go to work. We are selling private treaty in 2020.

All bulls have been DNA tested and are parental verified, plus they're tested and are believed to be free of known genetic defects. All EPDs have been genomically enhanced to boost accuracy.

Yearling bulls available are:



### **RRR Mr Baltic 13G**

(ASA #3613604) ¼ Simmental ¼ Angus bull who ranks in the top 10% of \$TI and \$API. He is a long-sided bull with above average growth and excellent carcass EPD's.

**Birthdate:** 1-27-2019 • **Coat color:** Homozygous Black • **Polled status:** Homozygous Polled

**Sire:** Hook's Baltic 17B • **Dam:** RRR Ms In Focus 02C • **MGS:** SDS In Force 112Y

**Adj. BW:** 83 • **Adj. WW:** 501 • **\$API:** 150.0 • **\$TI:** 81.7

### **RRR Mr BlackHawk 16G**

(ASA #3613654) ¼ Simmental ¼ Angus bull who ranks in the top 3% of calving ease EPD and top 4% of \$TI and \$API. This larger-framed black bull is also high for all of the growth indicators, ranking in the top 15% of the breed for Weaning Weight.

**Birthdate:** 1-29-2019 • **Coat color:** Homozygous Black • **Polled status:** Homozygous Polled

**Sire:** Hook's Black Hawk 50B • **Dam:** RRR Ms B54 83E • **MGS:** HRM Shear Force B54

**Adj. BW:** 74 • **Adj. WW:** 545 • **\$API:** 154.4 • **\$TI:** 82.9



### **RRR Mr Baltic 22G**

(ASA #3613573) ½ Simmental ½ Angus bull that is deep-sided, thick-made, stout and just plain good. In addition, he is well above average for growth, has good carcass EPD's and ranks well in both Indexes.

**Birthdate:** 1-30-2019 • **Coat color:** Homozygous Black • **Polled status:** Homozygous Polled

**Sire:** Hook's Baltic 17B • **Dam:** 605D • **MGS:** TC Thunder 805

**Adj. BW:** 85 • **Adj. WW:** 641 • **\$API:** 135.1 • **\$TI:** 77.4

### **RRR Mr Eagle 23G**

(ASA #3613642) ¾ Simmental bull who ranks in the top 10% of \$TI and top 20% of \$API. 23G is a thick, long-sided, high volume bull calf that will add pounds to your calf crop.

**Birthdate:** 1-30-2019 • **Coat color:** Homozygous Black • **Polled status:** Homozygous Polled

**Sire:** Hook's Eagle 6E • **Dam:** 3C Crocus 3394A B • **MGS:** TNT Tanker U263 • **Adj. BW:** 77 • **Adj. WW:** 618 • **\$API:** 139.9 • **\$TI:** 80.8





### RRR Mr Eagle 27G

(ASA #3613652) Purebred Simmental bull who ranks in the top 3% of \$API and top 4% of \$TI. An outstanding son of Eagle that is deep-sided, moderate-framed and soggy. 27G could also work as a heifer bull with CE EPD in the top 5% of the breed and a 73 pound adjusted birthweight.

**Birthdate:** 1-31-2019 • **Coat color:** Homozygous Black • **Polled status:** Homozygous Polled

**Sire:** Hook's Eagle 6E • **Dam:** WRC Mrs Ranch Hand Y186 •

**MGS:** Sand Ranch Hand

**Adj. BW:** 73 • **Adj. WW:** 543 • **\$API:** 152.0 • **\$TI:** 82.0

### RRR Mr Cowboy Up 30G

(ASA #3613680) ¾ Simmental bull that is soggy, thick and stout but has the data to make a heifer bull, with top 5% calving ease EPD and a 65-pound adjusted birthweight.

**Birthdate:** 2-1-2019 • **Coat color:** Homozygous Black • **Polled status:** Homozygous Polled

**Sire:** TJ Cowboy Up 529B • **Dam:** RRR Ms Premium Beef 09A •

**MGS:** GW Premium Beef 021TS

**Adj. BW:** 65 • **Adj. WW:** 536 • **\$API:** 145.3 • **\$TI:** 75.0



### RRR Mr Beacon 36G

(ASA #3613588) ½ Simmental ½ Angus bull that is long-sided and larger-framed. With a commercial dam that has minimal pedigree information he still ranks in the top 35% of the breed for \$API and well above average in most of the other traits that affect your bottom line.

**Birthdate:** 2-3-2019 • **Coat color:** Heterozygous Black • **Polled status:** Heterozygous Polled with scurs

**Sire:** Hook's Beacon 56B • **Dam:** 475B

**Adj. BW:** 82 • **Adj. WW:** 562 • **\$API:** 130.8 • **\$TI:** 75.9



### RRR Mr BlackHawk 49G

(ASA #3613650) Purebred Simmental bull who ranks in the top 1% \$TI and top 10% \$API. This black bull has a white star on his forehead, which will help you sort out his scale-busting calves at weaning time, since both weaning and yearling weight EPD's are in the top 2%.

**Birthdate:** 2-4-2019 • **Coat color:** Homozygous Black • **Polled status:** Homozygous Polled

**Sire:** Hook's Black Hawk 50B • **Dam:** Hook's Diamond Girl 22D  
• **MGS:** Hook's Broadway 11B

**Adj. BW:** 91 • **Adj. WW:** 659 • **\$API:** 142.1 • **\$TI:** 89.0

### RRR Mr Zenith 51G

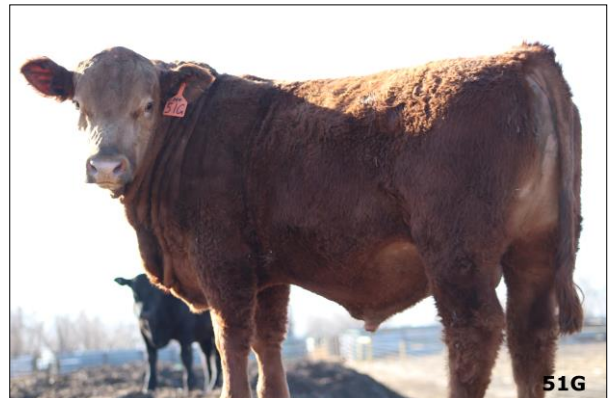
(ASA #3613678) ¾ Simmental ¼ Angus red bull that is massive, heavy-musled and correct, and ranks in the top 5% of the breed for growth traits.

**Birthdate:** 2-4-2019 • **Coat color:** Red • **Polled status:** Homozygous Polled

**Sire:** WS Zenith Z55 • **Dam:** RRR Ms Premium Beef 10A •

**MGS:** GW Premium Beef 021TS

**Adj. BW:** 89 • **Adj. WW:** 633 • **\$API:** 139.1 • **\$TI:** 77.6





### RRR Mr BlackHawk 62G

(ASA #3613635) ¾ Simmental ¼ Angus is a heifer-bull prospect who ranks in the top 15% for calving ease and top 10% for both indexes.

**Birthdate:** 2-9-2019 • **Coat color:** Homozygous Black • **Polled status:** Homozygous Polled  
**Sire:** Hook's Black Hawk 50B • **Dam:** RRR Ms B54 66E • **MGS:** HRM Shear Force B54  
**Adj. BW:** 84 • **Adj. WW:** 563 • **\$API:** 151.0 • **\$TI:** 81.0



### RRR Mr Baltic 63G

(ASA #3613621) ¾ Simmental ¼ Angus bull that is moderate-framed, thick and stout. He is also above average for almost every trait that puts money on your bottom line, including top 20% for both indexes.

**Birthdate:** 2-10-2019 • **Coat color:** Homozygous Black • **Polled status:** Homozygous Polled  
**Sire:** Hook's Baltic 17B • **Dam:** PSFB19 • **MGS:** MCM Top Grade 018X  
**Adj. BW:** 86 • **Adj. WW:** 510 • **\$API:** 140.3 • **\$TI:** 76.9

### RRR Mr Cowboy Cut 64G

(ASA #3613644) Purebred Simmental bull calf that is larger-framed, long-sided and heavily muscled. He is also a high-growth bull with top 10% ranking for weaning and yearling weight and top 5% for both indexes.

**Birthdate:** 2-10-2019 • **Coat color:** Homozygous Black • **Polled status:** Homozygous Polled  
**Sire:** CCR Cowboy Cut 5048Z • **Dam:** RRR Ms Invasion 23Y • **MGS:** Triple C Invasion R47K  
**Adj. BW:** 95 • **Adj. WW:** 661 • **\$API:** 147.4 • **\$TI:** 80.8



### RRR Mr All Aboard 93G

(ASA #3613653) Red ⅝ Simmental ⅜ Angus bull who ranks top 1% for \$TI and top 4% for \$API. He is also a heifer prospect with a 17.5 CE EPD, but still ranks top 10% for growth.

**Birthdate:** 2-27-2019 • **Coat color:** Red • **Polled status:** Homozygous Polled  
**Sire:** WS All Aboard B80 • **Dam:** RRR Ms Wyatt 49B • **MGS:** MCC Wyatt 2003  
**Adj. BW:** 74 • **Adj. WW:** 646 • **\$API:** 154.4 • **\$TI:** 88.4



### RRR Mr 67D 96G

(ASA #3613597) ⅝ Simmental ⅜ Angus high-growth calf from a commercial dam that has the genetics to boost weaning and yearling weights to new heights.

**Birthdate:** 2-27-2019 • **Coat color:** Heterozygous Black • **Polled status:** Homozygous Polled  
**Sire:** RRR Mr Nightforce 67D • **Dam:** 416B  
**Adj. BW:** 95 • **Adj. WW:** 653 • **\$API:** 121.9 • **\$TI:** 74.8

### Stop by or call us!

Curtis & Susan Russell, 24614 Co. Road G, Sugar City, CO

**Web:** [www.ReflectedRRanch.com](http://www.ReflectedRRanch.com)

**Email:** [reflected.r.ranch@gmail.com](mailto:reflected.r.ranch@gmail.com)

**Cell ph:** Curt: 719-469-2857, or Susan: 719-469-0020

We took a few random candid photos of the bulls, but we hope you'll come look in person.

### **RRR Mr Cowboy Up 99G**

(ASA #3613603) Moderate-framed, long-sided Purebred Simmental bull who ranks top 10% for \$API, top 5% for \$TI and top 30% for growth.

**Birthdate:** 3-1-2019 • **Coat color:** Homozygous Black • **Polled status:** Homozygous Polled

**Sire:** TJ Cowboy Up 529B • **Dam:** RRR Ms Uno Mas 301C • **MGS:** WLE Uno Mas X549

**Adj. BW:** 89 • **Adj. WW:** 505 • **\$API:** 145.1 • **\$TI:** 80.4



### **RRR Mr 67D 107G**

(ASA #3613600) Moderate-framed, high-volume Red  $\frac{3}{8}$  Simmental  $\frac{5}{8}$  Angus bull with top-notch marbling EPD's.

**Birthdate:** 3-7-2019 • **Coat color:** Red • **Polled status:** Homozygous Polled

**Sire:** RRR Mr Nightforce 67D • **Dam:** 421B

**Adj. BW:** 85 • **Adj. WW:** 613 • **\$API:** 116.8 • **\$TI:** 72.7

And age-advantaged bulls available are:

### **RRR Mr Zenith 07F**

(ASA #3465233)  $\frac{5}{8}$  Simmental  $\frac{3}{8}$  Angus coming two-year old with a world of muscle and a high-volume middle. 07F ranks well above average for most of the EPD's that contribute to the bottom line.

**Birthdate:** 1-25-2018 • **Coat color:** Red • **Polled status:** Homozygous Polled

**Sire:** WS Zenith Z55 • **Dam:** RRR Ms Selective 23X • **MGS:** GAR Selective

**Adj. BW:** 80 • **Adj. WW:** 537 • **Adj. YW:** 1014 • **Ultrasound Wt:** 931 • **Ultrasound IMF:** 2.47 • **Ultrasound backfat:** 0.19 • **Ultrasound Ribeye Area:** 12.25 • **\$API:** 114.3 • **\$TI:** 74.7

### **RRR Mr Marshall 18F**

(ASA #3465309)  $\frac{5}{8}$  Simmental  $\frac{3}{8}$  Angus deep-bodied, long-sided bull who ranks in the top 10% for growth and top 4% for API, with excellent carcass traits as well.

**Birthdate:** 1-30-2018 • **Coat color:** Homozygous Black • **Polled status:** Homozygous Polled

**Sire:** GW Marshall 756A • **Dam:** RRR Ms In Force 06C • **MGS:** SDS In Force 112Y

**Adj. BW:** 76 • **Adj. WW:** 627 • **Adj. YW:** 1097 • **Ultrasound Wt:** 1004.0 • **Ultrasound IMF:** 3.05 • **Ultrasound backfat:** 0.13 • **Ultrasound Ribeye Area:** 13.43 • **\$API:** 153.5 • **\$TI:** 86.2

### **RRR Mr Substance 41F**

(ASA #3465244)  $\frac{3}{4}$  Simmental  $\frac{1}{4}$  Angus bull who ranks high for both growth and the \$indexes. He is deep-bodied, thick and well-balanced. We used him to clean up a group of cows last year.

**Birthdate:** 2-11-2018 • **Coat color:** Homozygous Black • **Polled status:** Homozygous Polled

**Sire:** GW-WBF Substance 820Y • **Dam:** RRR Ms Manifest 11Z • **MGS:** Nichols Manifest T79

**Adj. BW:** 81 • **Adj. WW:** 579 • **Adj. YW:** 997 • **Ultrasound Wt:** 960.0 • **Ultrasound IMF:** 2.52 • **Ultrasound backfat:** 0.18 • **Ultrasound Ribeye Area:** 12.73 • **\$API:** 136.5 • **\$TI:** 86.2

### **RRR Mr Combination 88F**

(ASA #3465231)  $\frac{1}{2}$  Simmental  $\frac{1}{2}$  Angus bull calf with lots of muscle and length in a moderate-sized package.

**Birthdate:** 2-4-2018 • **Coat color:** Homozygous Black • **Polled status:** Homozygous Polled

**Sire:** Connealy Combination 0188 • **Dam:** RRR Ms Invasion 15W • **MGS:** Triple C Invasion R47K

**Adj. BW:** NA • **Adj. WW:** 530 • **Adj. YW:** 1055 • **Ultrasound Wt:** 1007.0 • **Ultrasound IMF:** 3.33 • **Ultrasound backfat:** 0.23 • **Ultrasound Ribeye Area:** 13.31 • **\$API:** 122.2 • **\$TI:** 69.6

## RRR Mr Nightforce 67D

(ASA #3156310)  $\frac{5}{8}$  Simmental  $\frac{3}{8}$  Angus bull is a sire that we have used ourselves. We'd offer this red powerhouse for sale to customers needing an older proven bull. He ranks in the top 2% of both \$API and \$TI.

**Birthdate:** 3-7-2017 • **Coat color:** Red • **Polled status:** Homozygous Polled

**Sire:** TRPH RRR Nightforce B30 • **Dam:** RRR Ms Selective 03Y • **MGS:** GAR Selective

**Adj. BW:** 71 • **Adj. WW:** 488 • **Adj. YW:** 1019 • **Ultrasound Wt:** 990.0 • **Ultrasound IMF:** 3.12 • **Ultrasound backfat:** 0.12 • **Ultrasound Ribeye Area:** 14.51 • **\$API:** 160.5 • **\$TI:** 85.0

Data was pulled 1/1/2020. All bulls are guaranteed and sold on a first-come, first-serve basis. So schedule your stop to come see Reflected R Ranch today! Call Curt at 719-469-2857.

## Thanks!

As we start our list of 2020 buyers, we're thankful to 3R Ranch, which already selected its bulls from our offering. Also thanks to Loren Mick for his purchase of AI bred two-year old heifers that we developed this summer. We sell on a first-come, first-serve basis, so schedule your visit.

## Development & viewing near Sugar City

Our sale bulls have already gone through rigid culling, and we have kept an elite offering for you.

Our bulls have solid pedigrees to provide a combination of easy calving, good growth, moderate frame size and milk, good carcass traits and high profitability. Both the composite and purebred bulls average rank is in the top 10% of the breed for \$API. With those rankings, you have the opportunity to make rapid genetic progress for profitability.

Like our entire herd, all bulls are parental verified. All bulls are tested for whether they carry a recessive gene for horns or red coat color.

Perhaps most important, every bull has been

DNA tested and has genomically-enhanced EPD's. While the science behind all the testing and calculations is out of my league, what that means from a practical standpoint is that when you buy virgin bulls with GE EPD's, it's **like buying a bull where you already know how his first calf crop performed**. In plain words, accuracies are improved to dramatically reduce the chance of a surprise in the first calf crop.

In other words, we have custom-designed bulls to work for your operation and have done the homework, so that you may buy with confidence. Come by to see how the bulls are growing. Call for directions and, perhaps, to verify we're home.

## \$ Indexes blend EPDs and economics

Though EPDs allow for the comparison of genetic levels for many economically important traits, they only provide a piece of the economic puzzle. That's where \$ indexes come in. Through well conceived, rigorous mathematical computation, American Simmental's \$ indexes blend EPDs and economics to estimate an animal's overall impact on your bottom line. Both \$API and \$TI rankings are mentioned in this newsletter.

- **All-Purpose Index (API):** Evaluates sires for use on the entire cow herd with the portion of their daughters required to maintain herd size retained and the remaining heifers and steers fed and sold grade and yield.
- **Terminal Index (TI):** Evaluates sire for use on mature Angus cows with all offspring put on feed and sold grade and yield.
- Other EPD's can be viewed on the ASA website, at: <https://herdbook.org/simmapp>. Click on Data Search then click on Animal Search and input the registration numbers of the bulls you are interested in. Since the EPD calculations are now run on a weekly basis to utilize the newest performance data as it comes in you will get the most up to date data by checking the website, or just drop us a call or email and we'll get them for you.



# *We're looking toward the year ahead*

Welcome to the new decade. May God grant you a healthy & happy 2020. Our ranch news:

- We will start calving soon. After all our planned mating research, we're looking forward to the calves hitting the ground.

- We are NO longer a part of the High-Altitude bull sale, where we were a guest partner for 5 years. We are **selling bulls private treaty in 2020** and we've been invited to be a partner in a long-established operation with our 2020 calf crop. So, in addition to private treaty in 2021, we'll offer bulls through RA Brown Ranch of Throckmorton, TX. Their ranch, established in 1895, is a premier performance-oriented family operation that sells 18-month-old bulls. We're pleased they believe in our top-quality cattle and interested in us joining their elite cooperator program. We look forward to the years ahead.

We look forward to the years ahead.

- As you may have heard, we sold our retail feed store and mill WW Feed & Supply so that we could focus on our ranch. It's still advisable to give us a call - 719-469-2857 - in case we're out building fence, or volunteering.

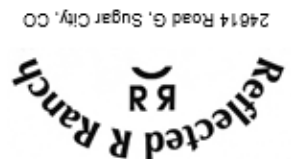
- Both Curt & Susan help with events in conjunction with National Western Stock Show. We're involved in Colorado Simmental and Colorado Cattlemen's associations.

- Our son Chad earned two bachelor's degrees in December, and he's begun his work on a Master's degree in Animal Breeding & Genetics.



Standard mail  
U.S. Postage Paid  
Permit #303  
La Junta, CO 81050

Return Service Requested  
Postmaster send returns to:  
c/o WW Feed & Supply  
303 W. 1st St., La Junta, CO 81050



24614 Road G, Sugar City, CO